



Indiana's Dementia Strategic Plan (DSP)

2024 Midwest Dementia Summit

Thank you for being here!

Some of you travelled far to be here.



Indiana's Dementia Strategic Plan Coordinator

Shannon Effler, MSW

Director of Geriatric Programs, Indiana
University

Associate Director of imAGE



The imAGE program trains current and future health care providers for older adults by:

- Collaboratively developing and administering cutting-edge strategies to educate learners across disciplines with geriatric expertise.
- Addressing the needs of entities seeking to train current and future generations of health care professionals to optimally meet the needs of the aging United States population.
- Disseminating evidence-based clinical models of care for complex older adults.

Contact us!

[https://medicine.iu.edu/
iuimage@iu.edu](https://medicine.iu.edu/iuimage@iu.edu)



— Innovating Maximizing —
Advancing Geriatric Education

at Indiana University School of Medicine

Examples of current services and products:

- **Aging Brain Care:** provide implementation support and training on this evidence based dementia collaborative care model for GUIDE and beyond.
- **PathWays for Aging ECHOs:** program uses the evidence-based model of ECHO to facilitate learning on person-centered and geriatric best practices for Indiana's managed long-term services and supports program.
- **IU Health Ball Memorial Residency Curriculum:** developed, implemented, and are evaluating a geriatrics curriculum for all first-year residents at IU Health Ball Memorial Hospital.

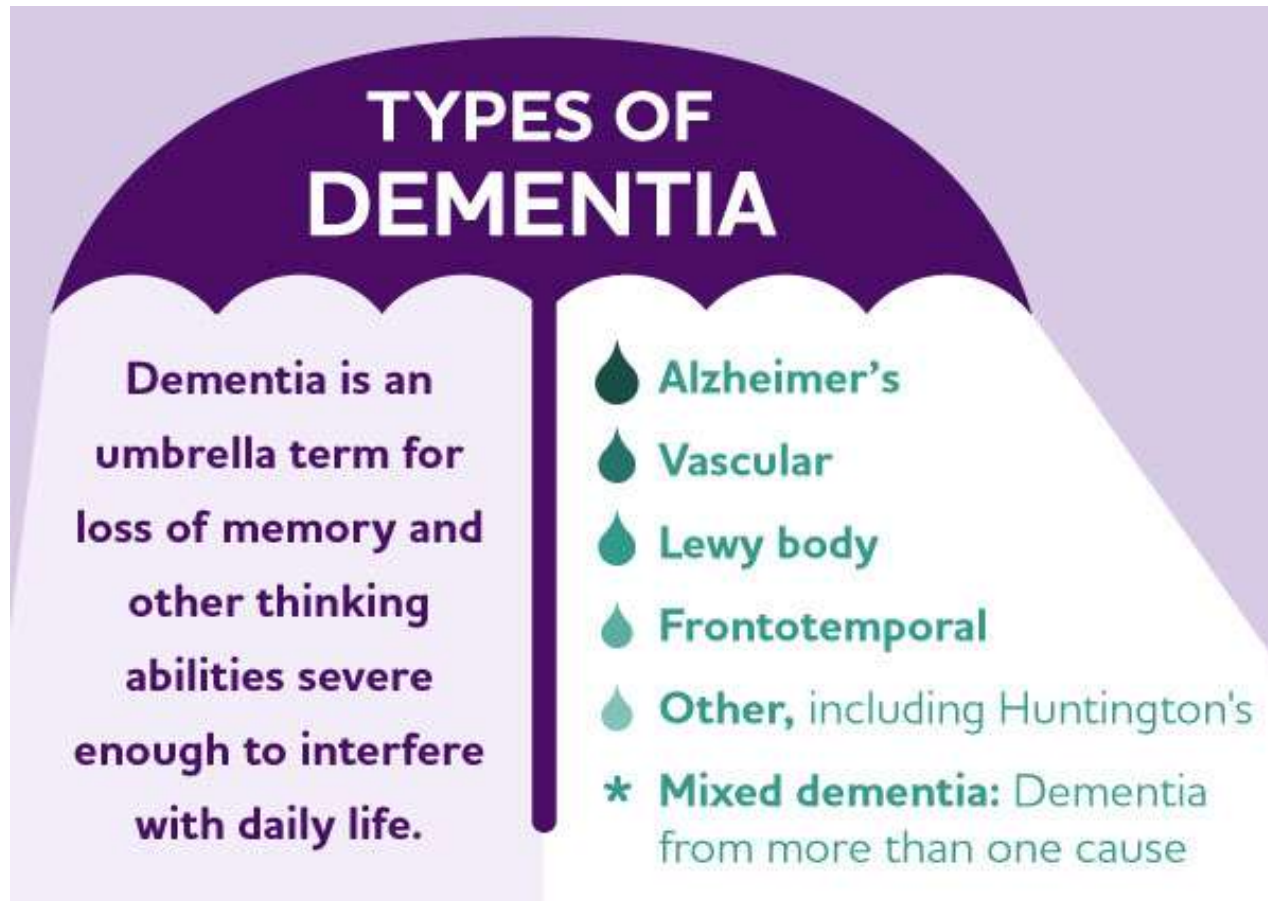
Agenda



- Overview of Indiana's Dementia Strategic Plan (DSP)
- Opportunity to provide input on the future direction of the plan

*Please pick up a copy of the DSP 2023 Report.

What is dementia?



*image from Alzheimer's Association

Indiana



- Alzheimer's disease is a growing public health crisis in Indiana. The impact of Alzheimer's is projected to rise, and the most recent data show:
 - 121,000 people aged 65 and older are living with Alzheimer's in Indiana.
 - 11.2% of people aged 45 and older have subjective cognitive decline.
 - 216,000 family caregivers bear the burden of the disease in Indiana.
 - 322 million hours of unpaid care provided by Alzheimer's caregivers.
 - \$5.1 billion is the value of the unpaid care.
 - \$1.2 billion is the cost of Alzheimer's to the state Medicaid program.

*Data from Alzheimer's Association

Goals



Dementia Strategic Plan charge:

Under Indiana Code (IC) 12-9.1-5, the Indiana Family and Social Services Administration (FSSA) Division of Aging (DA) is required to develop a Dementia Strategic Plan (DSP) to identify and significantly reduce the prevalence of dementia in Indiana.

Background:

2019 FSSA Division of Aging launched the “Dementia Care Initiative”

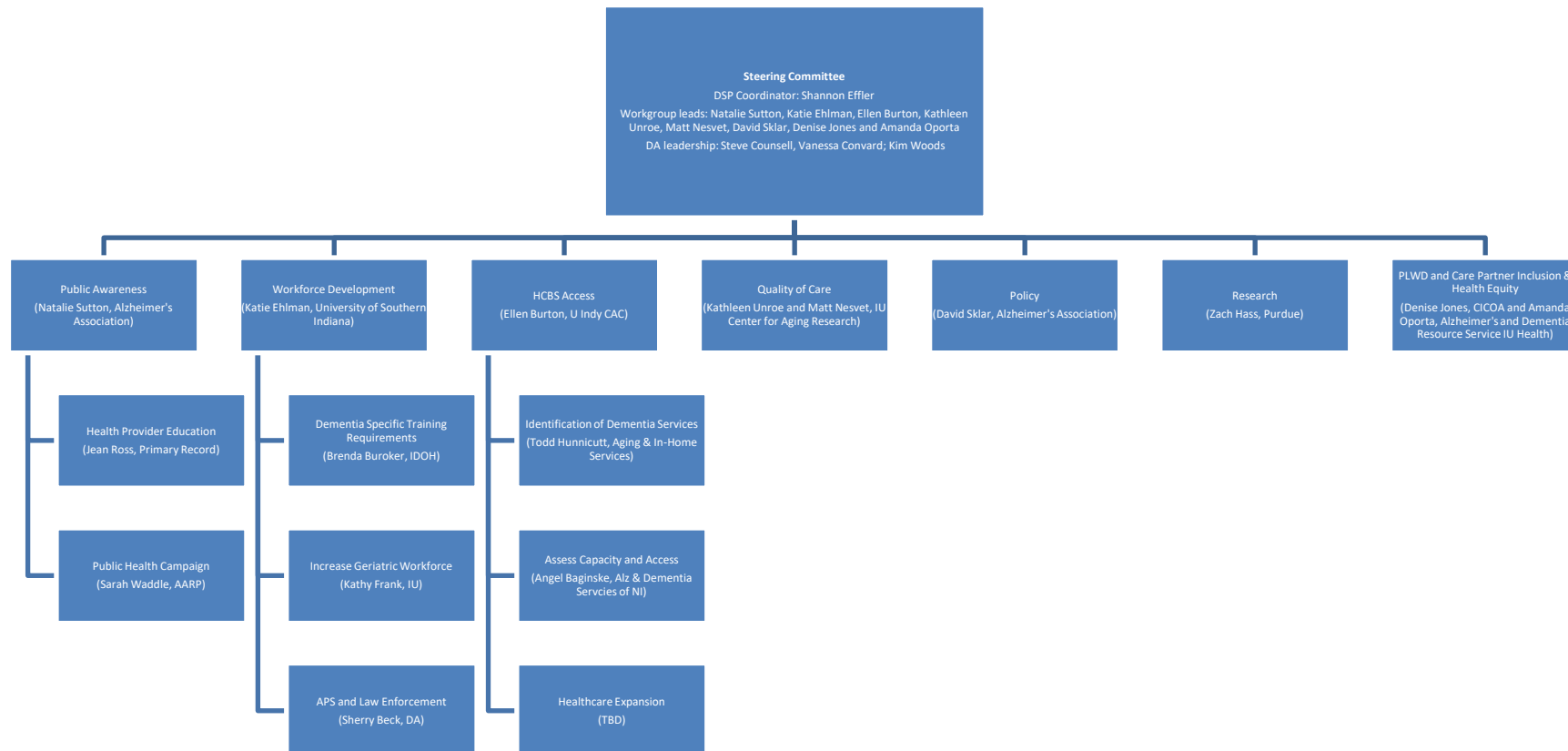
In 2021, HEA 1177 established the Indiana Dementia Strategic Plan.



Structure of the DSP

- Division of Aging Leadership
- Steering Committee
 - DA Leadership, DSP Coordinator, and Workgroup leads
- Workgroups
 - HCBS Access, Workforce, Public Awareness, Quality of Care, Public Policy, Research, and PLWD, Care Partners, and Health Equity
 - Taskforces
- Advisory Board
 - Two meetings in 2024

Structure of the DSP



Workgroups



- HCBS Access, Ellen Burton (University of Indianapolis)
- Workforce Development, Dr. Katie Ehlman (University of Southern Indiana)
- Public Awareness, Natalie Sutton (Alzheimer's Association)
- Quality of Care, Dr. Kathleen Unroe and Matt Nesvet (Indiana University Center for Aging Research)
- Public Policy, David Sklar (Alzheimer's Association)
- People living with Dementia, Care Partners, and Health Equity, Amanda Oporta (IU Health) and Denise Jones (CICOA)
- Research, Zach Hass (Purdue)

HCBS Access

Led by Ellen Burton, Executive Director, CAC,
University of Indianapolis



Charge:

Identify strategies to increase access to home and community-based services for individuals with dementia.

Workforce

Led by Dr. Katie Ehlman, USI



Charge:

Identify strategies to enhance Indiana's dementia-based workforce.

Public Awareness

Led by Natalie Sutton, Alzheimer's Association,
Greater Indiana Chapter



Charge:

Identify strategies to increase awareness
of dementia.

Quality of Care

Led by Dr. Kathleen Unroe and Matt Nesvet, PhD, IU
Center for Aging Research



Charge:

Identify strategies to enhance the quality of care for individuals with dementia.

Policy and State Resources Needed

Led by Kim Woods, State of Indiana



Charge:

Identify needed state policies or actions to act upon findings under this section and implement the recommendations of the plan, setting forth a time frame for implementation.

PLWD, Care Partners, and Health Equity

Led by Amanda Oporta, IU Health and Denise Jones, CICOA



Charge:

Include people's voices and experiences.

Recommend strategies to decrease health disparities concerning dementia in ethnic and racial populations in Indiana.

Research

Led by Zach Hass, Purdue



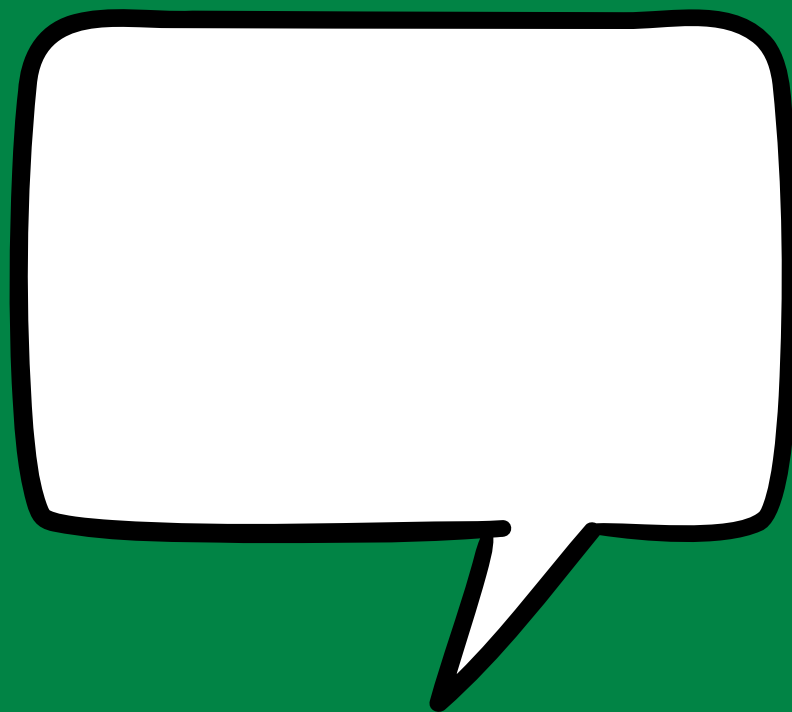
Charge:

Identify and increase state-based support for Alzheimer's disease research through Indiana universities and other resources.

Let's hear from you!



- What is most important for the State to address in each of the areas of the Dementia Strategic Plan?



HCBS Access

Led by Ellen Burton, Executive Director, CAC,
University of Indianapolis



Charge:

Identify strategies to increase access to home and community-based services for individuals with dementia.

Workforce

Led by Dr. Katie Ehlman, USI



Charge:

Identify strategies to enhance Indiana's dementia-based workforce.

Public Awareness

Led by Natalie Sutton, Alzheimer's Association,
Greater Indiana Chapter



Charge:

Identify strategies to increase awareness
of dementia.

Quality of Care

Led by Dr. Kathleen Unroe and Matt Nesvet, PhD, IU
Center for Aging Research



Charge:

Identify strategies to enhance the quality of care for individuals with dementia.

Policy and State Resources Needed

Led by Kim Woods, State of Indiana



Charge:

Identify needed state policies or actions to act upon findings under this section and implement the recommendations of the plan, setting forth a time frame for implementation.

PLWD, Care Partners, and Health Equity

Led by Amanda Oporta, IU Health and Denise Jones, CICOA



Charge:

Include people's voices and experiences.

Recommend strategies to decrease health disparities concerning dementia in ethnic and racial populations in Indiana.

Research

Led by Zach Hass, Purdue



Charge:

Identify and increase state-based support for Alzheimer's disease research through Indiana universities and other resources.

Questions?



Thank you!



Shannon Effler, MSW
Dementia Strategic Plan Coordinator
Director of Geriatric Programs
seffler@iu.edu